

LOCATION MAP

PORTION TO BE IMPROVED -----
 STATE AND FEDERAL ROUTES -----
 OTHER ROADS -----

DESIGN DESIGNATION

CURRENT A.D.T. (2016) ----- N/A
 DESIGN YEAR A.D.T. (2036) ----- N/A
 DESIGN HOURLY VOLUME (2036) ----- N/A
 DIRECTIONAL DISTRIBUTION ----- 50%
 TRUCKS (24 HOUR B&C) ----- N/A
 DESIGN SPEED ----- N/A
 LEGAL SPEED ----- N/A
 DESIGN FUNCTIONAL CLASSIFICATION ----- LOCAL

GENERAL NOTES

- CONTRACTOR SHALL ADHERE TO O.D.O.T. CONSTRUCTION AND MATERIALS SPECIFICATIONS, DATED JANUARY 1, 2016
- STAKING WILL BE DONE BY THE LOGAN COUNTY ENGINEER'S OFFICE
- CONTRACTOR SHALL ADHERE TO THE LOGAN COUNTY STORMWATER SUBREGULATIONS, THE LOGAN COUNTY SUBDIVISION SUBREGULATIONS AND THE LOGAN COUNTY TECHNICAL DESIGN STANDARDS
- CALL THE OHIO UTILITIES PROTECTION SERVICE (800-362-2764) AT LEAST TWO WORKING DAYS BEFORE YOU DIG



PLANS PREPARED BY:
 LOGAN COUNTY ENGINEER'S OFFICE
 1991 C.R. 13, P.O. BOX 427
 BELLEFONTAINE, OHIO 43311



LOGAN COUNTY
 ENGINEER'S OFFICE
 SCOTT C. COLEMAN, P.E., P.S.
 COUNTY ENGINEER

ZANESFIELD DRAINAGE PROJECT
 PHASE 3

VILLAGE OF ZANESFIELD
 2017

INDEX OF SHEETS

TITLE SHEET ----- 1
 SITE PLAN ----- 2
 PLAN & PROFILE ----- 3-4
 CROSS-SECTIONS ----- 5-9
 STRUCTURE DETAILS ----- 10

PROJECT DESCRIPTION

This project will begin at Sandusky Street/CR 5 and proceed west to Main Street, turn north and run parallel with Main Street and terminate after crossing under Bellefontaine Street/CR 10. Project also includes tile installation from the west for approximately 40 feet, under Main Street. The project will include a concrete box structure under Bellefontaine Street/CR 10, new tiles under Main Street, Walnut Alley, and Green Alley, and ditch work. The total length of the project is approximately 930 feet. All quality spoil is to be removed from the site.

APPROVALS

WE, THE VILLAGE OF ZANESFIELD OF LOGAN COUNTY, OHIO, HEREBY APPROVE THESE PLANS AND DECLARE THAT THE NECESSARY RIGHT-OF-WAY IS AVAILABLE FOR THIS IMPROVEMENT.

8-7-2017 [Signature]
 DATE VILLAGE OF ZANESFIELD

I HEREBY APPROVE THIS PLAN AND DECLARE THAT THE MAKING OF THIS IMPROVEMENT WILL REQUIRE THE CLOSING OF THE HIGHWAY TO THROUGH TRAFFIC, AND THAT PROVISIONS FOR THE MAINTENANCE AND SAFETY OF TRAFFIC WILL BE AS SET FORTH ON THESE PLANS AND ESTIMATES.

8-8-2017 [Signature]
 DATE LOGAN COUNTY, OHIO, ENGINEER

STANDARD CONSTRUCTION DRAWINGS		SUPPLEMENTAL SPECIFICATIONS	

FEDERAL PROJECT NO. NON-FEDERAL
 PID NO. NONE
 WORK ORDER NO. 5710
 RAILROAD INVOLVEMENT NONE
 PHASE 3
 1/10



KEY:
 D.N.D. DO NOT DISTURB
 E.O.P. EDGE OF PAVEMENT
 L.O.C. LIMITS OF CONSTRUCTION
 R.A.R. REMOVE AND REINSTALL
 R.C.P. ROCK CHANNEL PROTECTION, TYPE A
 ○ TREE
 ✕ REMOVE OBJECT

PLAN

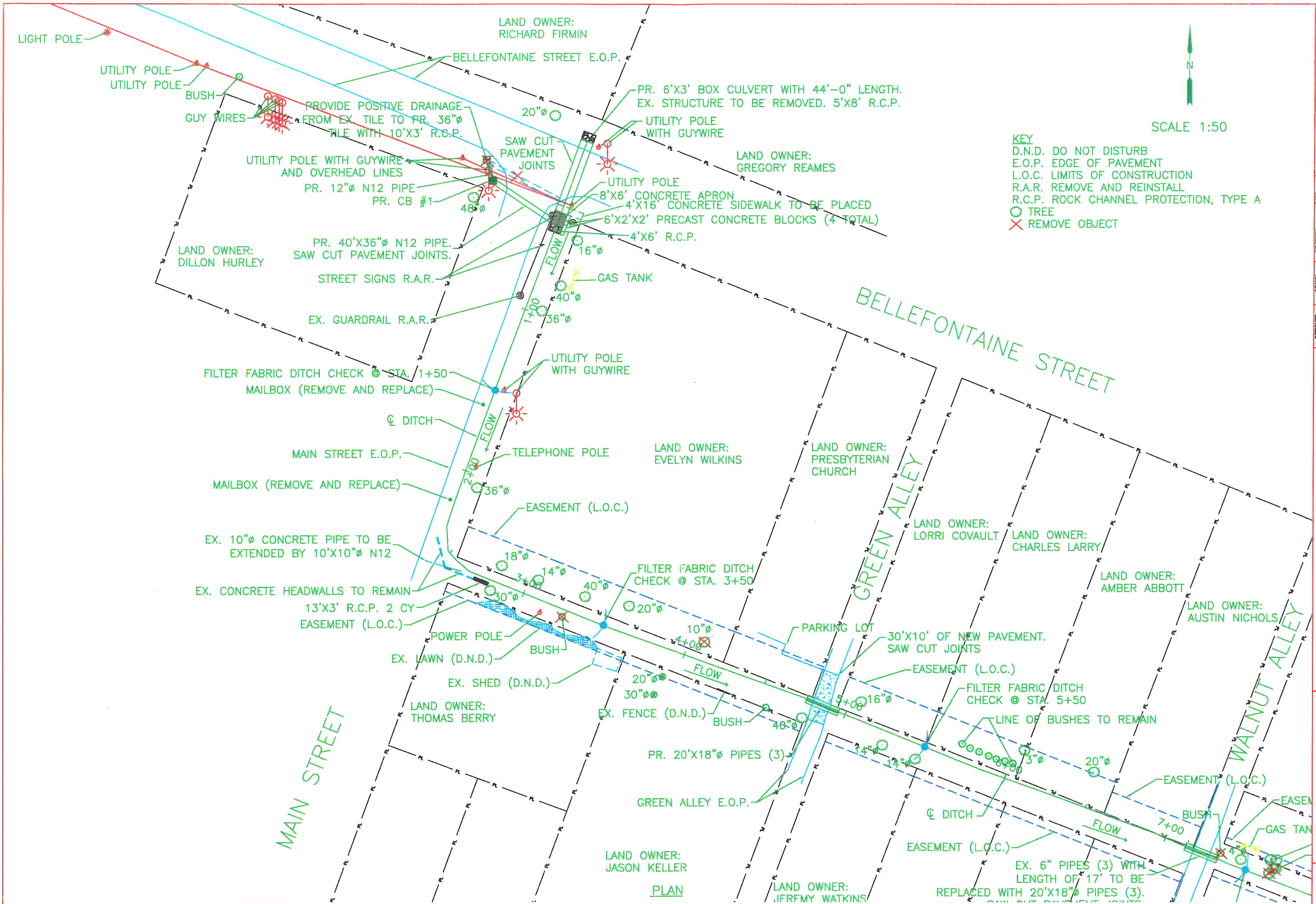
DESIGN AGENCY
 LOGAN COUNTY ENGINEER'S OFFICE
 1991 C.R. 13, P.O. BOX 427
 BELLEFONTAINE, OHIO 43311

DESIGNED	MAJK	CHECKED	SCC
DRAWN	MAJK	REVISED	
REVIEWED	CDJ	DATE	7/17/2017
WORK ORDER NUMBER	5710		

SITE PLAN
 STA. 0+00 TO 8+90

PHASE 3

2
10



PLAN

KEY
 D.N.D. DO NOT DISTURB
 E.O.P. EDGE OF PAVEMENT
 L.O.C. LIMITS OF CONSTRUCTION
 R.A.R. REMOVE AND REINSTALL
 R.C.P. ROCK CHANNEL PROTECTION, TYPE A
 ○ TREE
 ✕ REMOVE OBJECT

SCALE 1:50

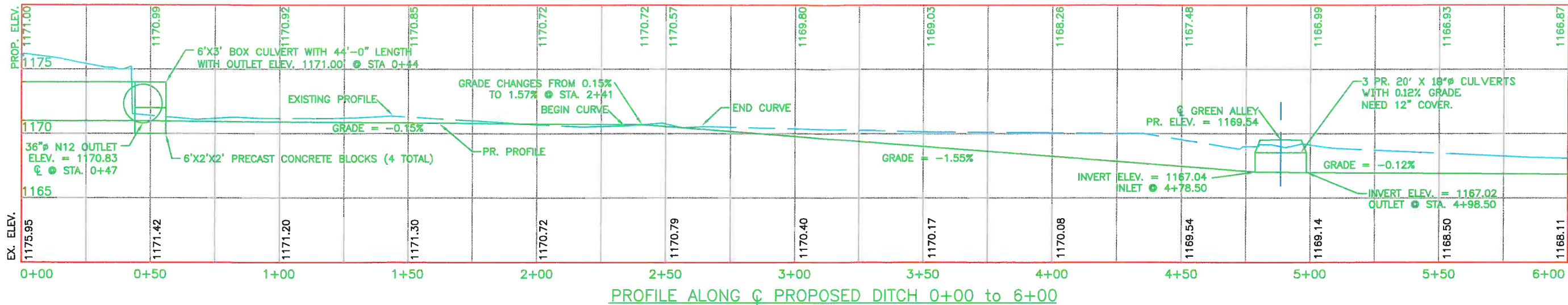
DESIGN AGENCY
 LOGAN COUNTY ENGINEER'S OFFICE
 1991 C.R. 13, P.O. BOX 427
 BELLEFONTAINE, OHIO 43311

DESIGNED	MJK	CHECKED	SCC
DRAWN	MJK	REVISED	
REVIEWED	CDJ	DATE	7/17/2017
		WORK ORDER NUMBER	5710

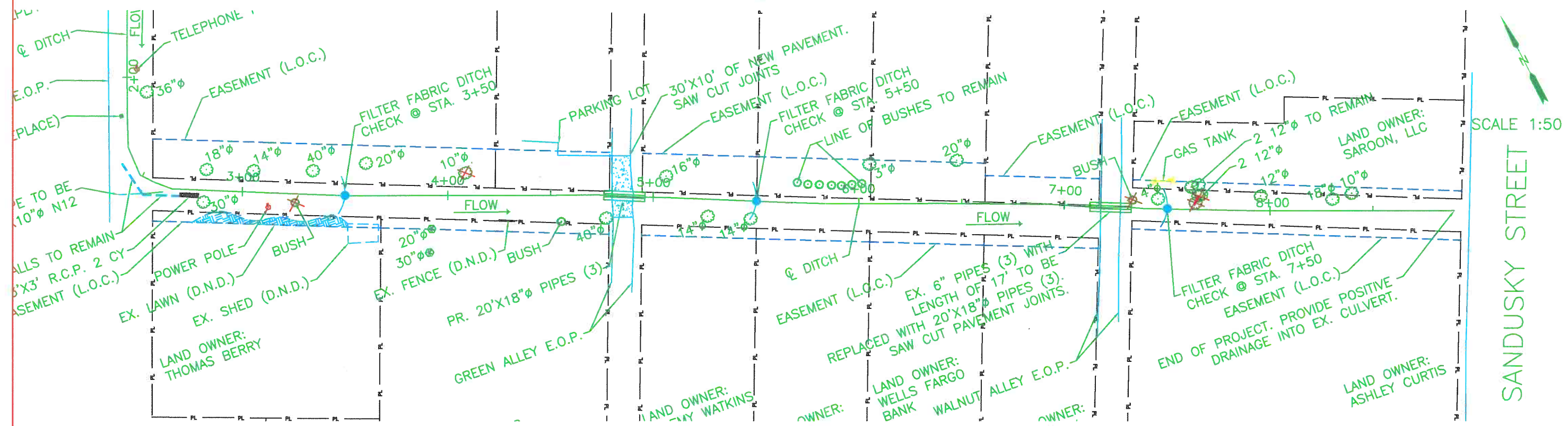
PLAN
 STA. 0+00 TO 6+00

PHASE 3

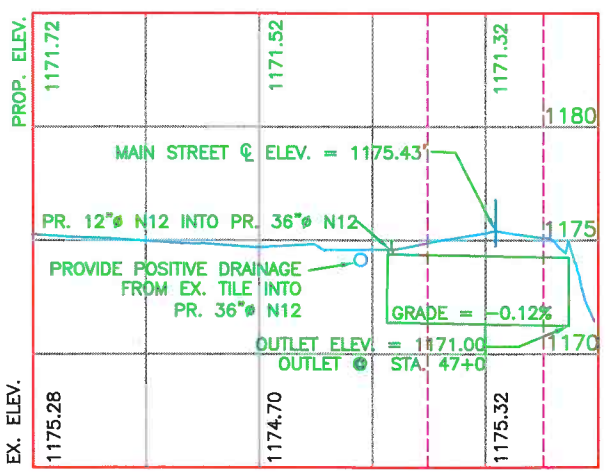
3
10



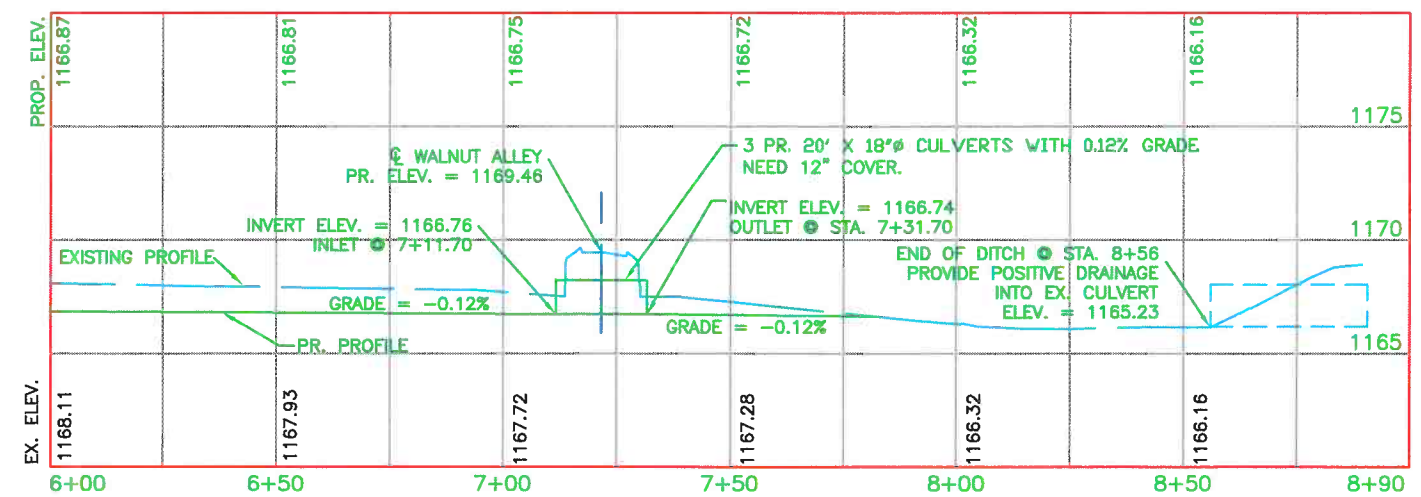
PROFILE ALONG \hat{C} PROPOSED DITCH 0+00 TO 6+00



PLAN



PROFILE ALONG \hat{C} PROPOSED 40' X 36" PIPE



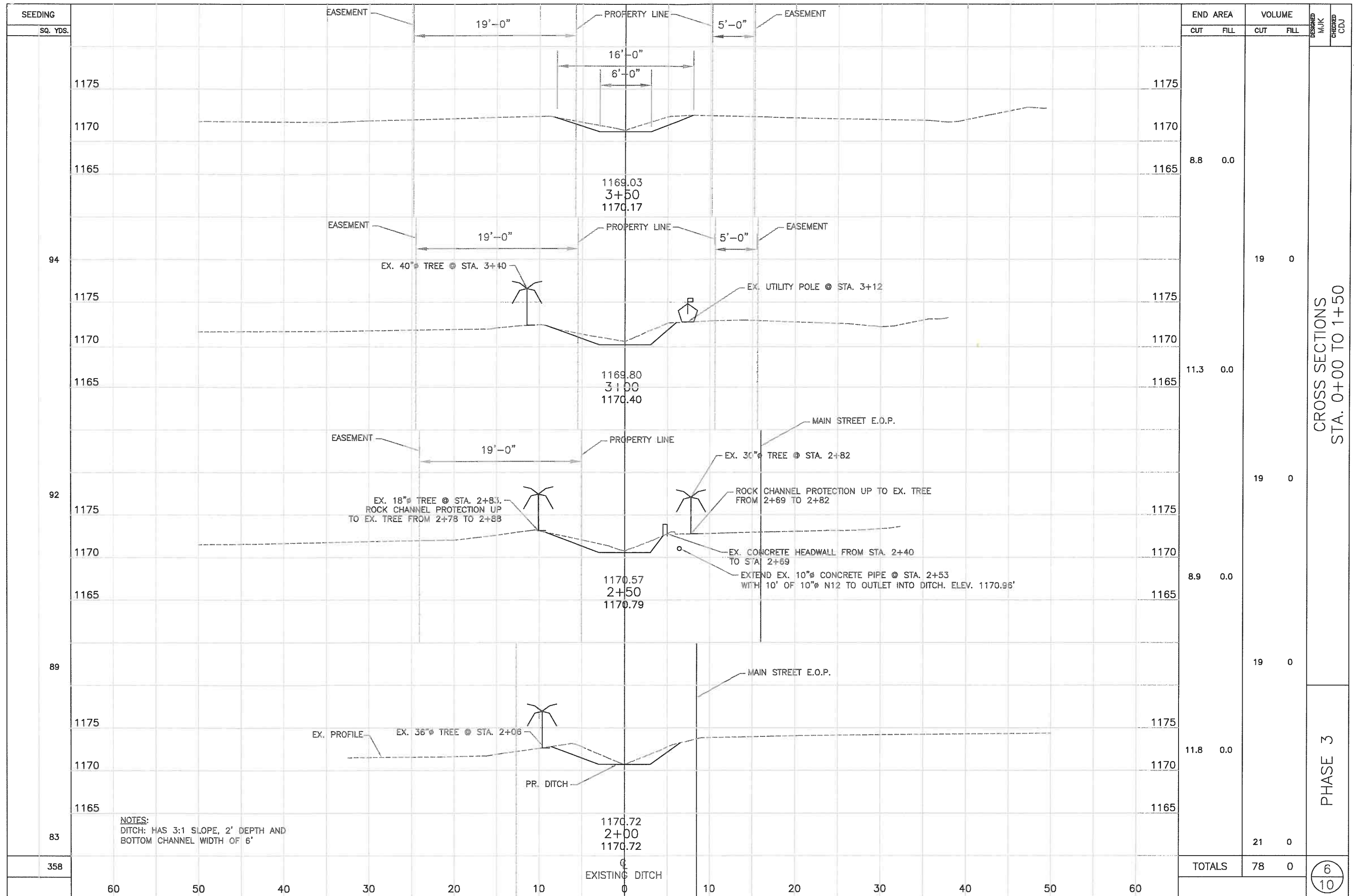
PROFILE ALONG \hat{C} PROPOSED DITCH 6+00 TO 8+90

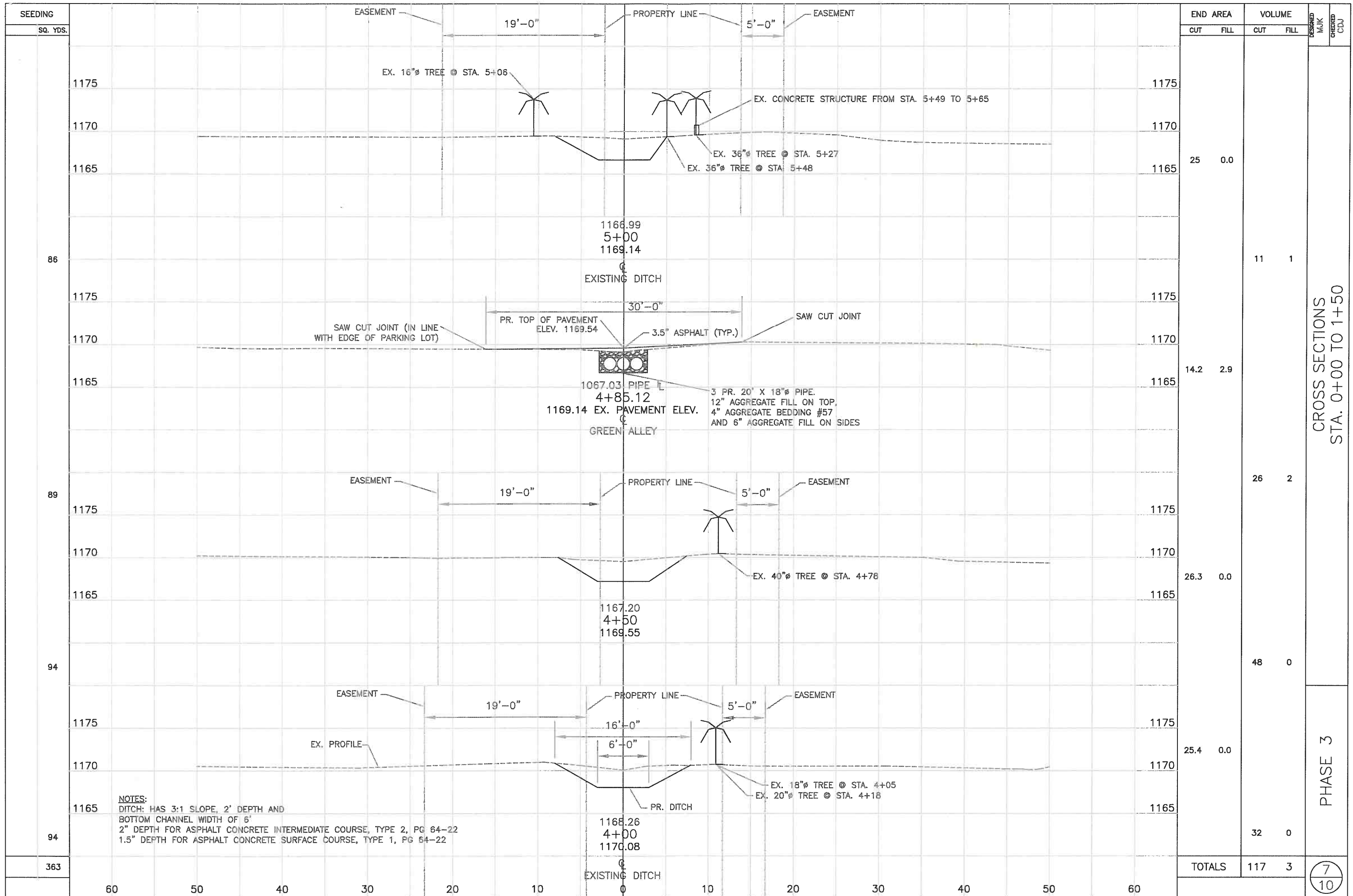
DESIGN AGENCY
LOGAN COUNTY ENGINEER'S OFFICE
1991 C.R. 13, P.O. BOX 427
BELLEFONTAINE, OHIO 43311

DESIGNED	MAJK	CHECKED	SCC
DRAWN	MAJK	REVISED	
REVIEWED	CDJ	DATE	7/17/2017
		WORK ORDER NUMBER	5710

PLAN STA. 6+00 TO 8+90
& PROFILE STA. 0+00 TO 8+90

PHASE 3





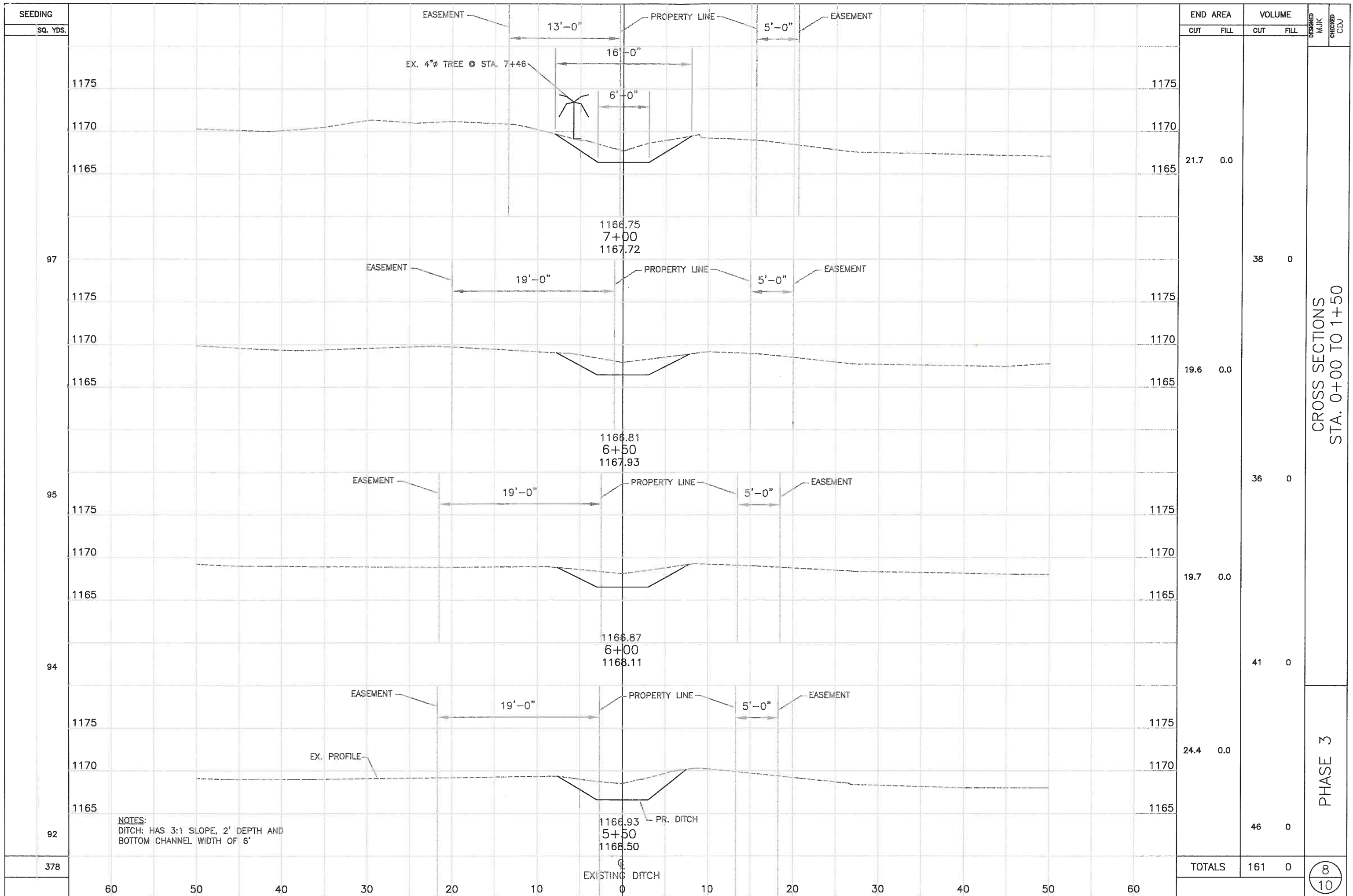
SEEDING SQ. YDS.	END AREA		VOLUME		DESIGNED MJK	CHECKED CDJ
	CUT	FILL	CUT	FILL		
1175						
1170						
1165	25	0.0				
86			11	1		
1175						
1170						
1165	14.2	2.9				
89			26	2		
1175						
1170						
1165	26.3	0.0				
94			48	0		
1175						
1170						
1165	25.4	0.0				
94			32	0		
363	TOTALS		117	3		

CROSS SECTIONS
STA. 0+00 TO 1+50

PHASE 3

7
10

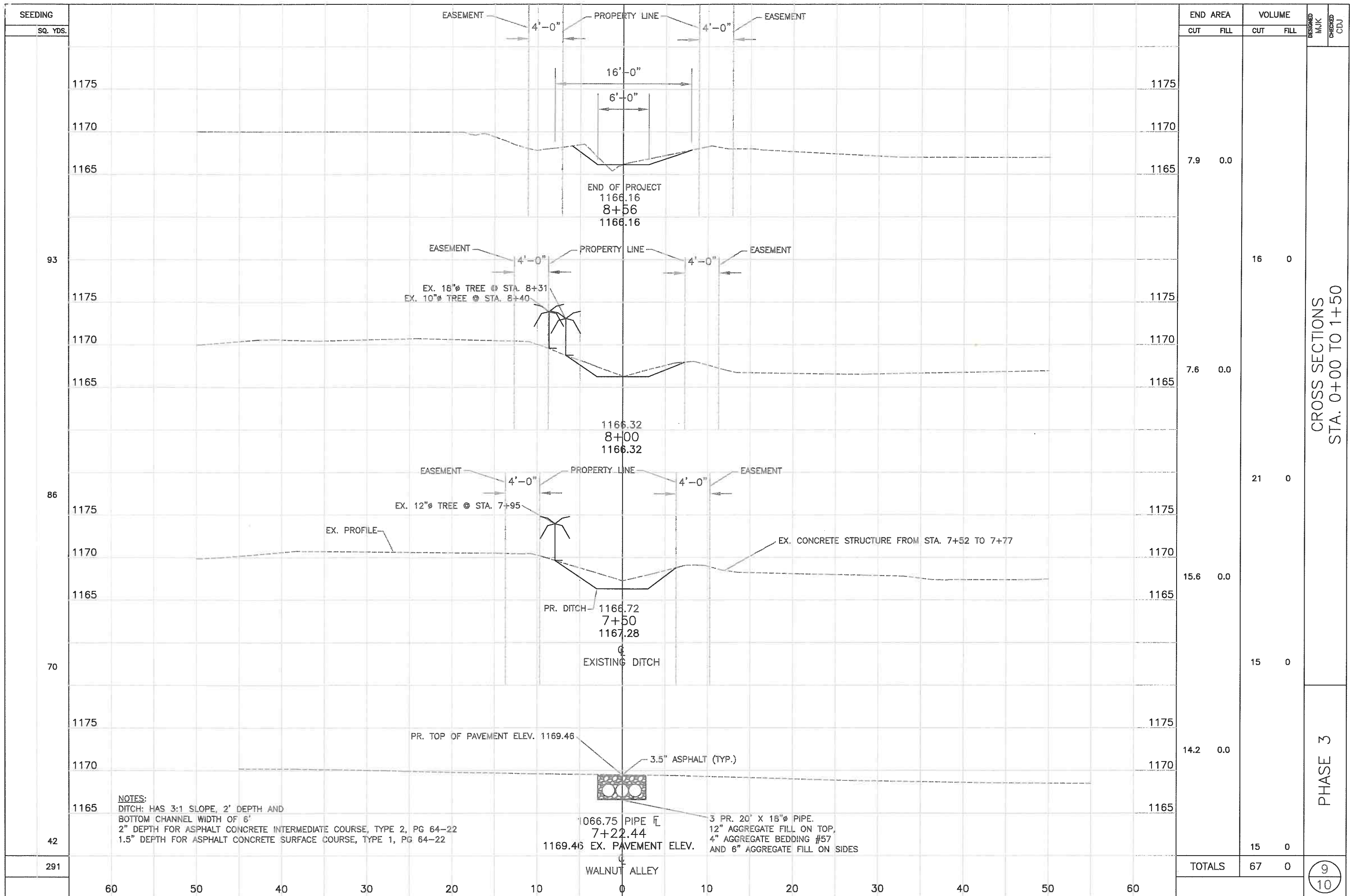
NOTES:
 DITCH: HAS 3:1 SLOPE, 2' DEPTH AND
 BOTTOM CHANNEL WIDTH OF 6'
 2" DEPTH FOR ASPHALT CONCRETE INTERMEDIATE COURSE, TYPE 2, PG 64-22
 1.5" DEPTH FOR ASPHALT CONCRETE SURFACE COURSE, TYPE 1, PG 64-22



CROSS SECTIONS
STA. 0+00 TO 1+50

PHASE 3

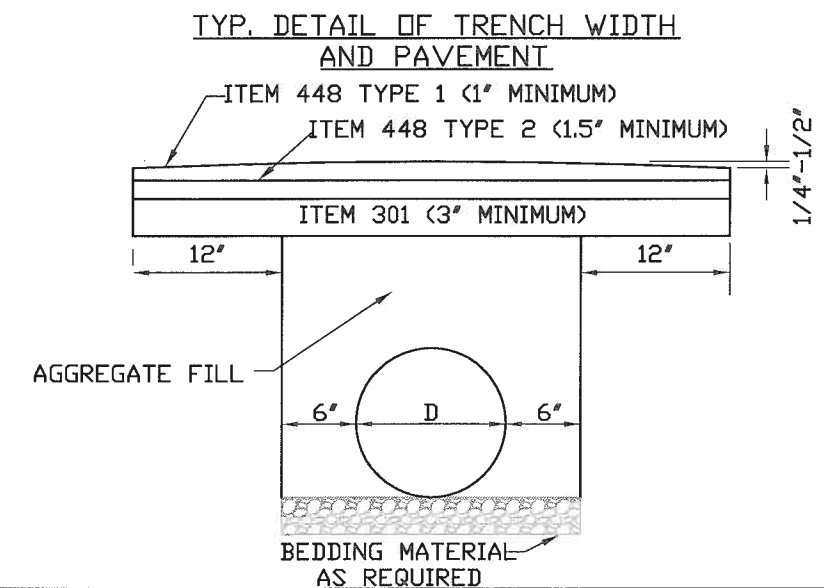
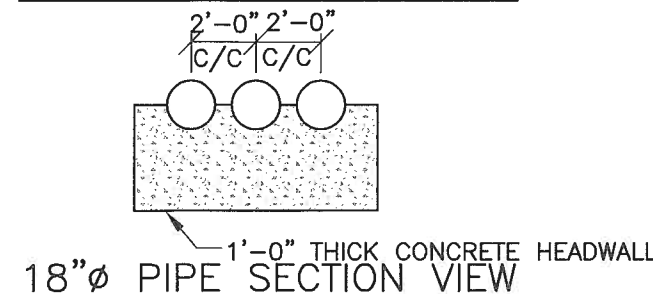
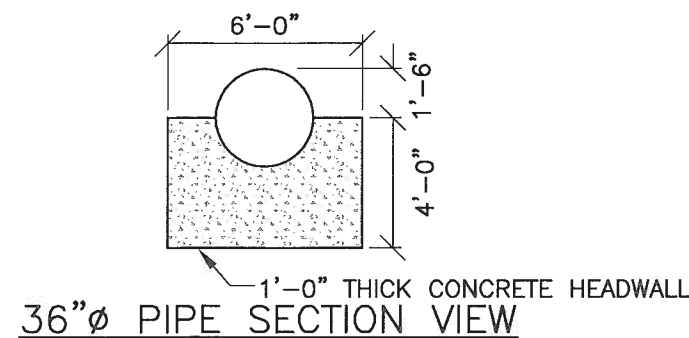
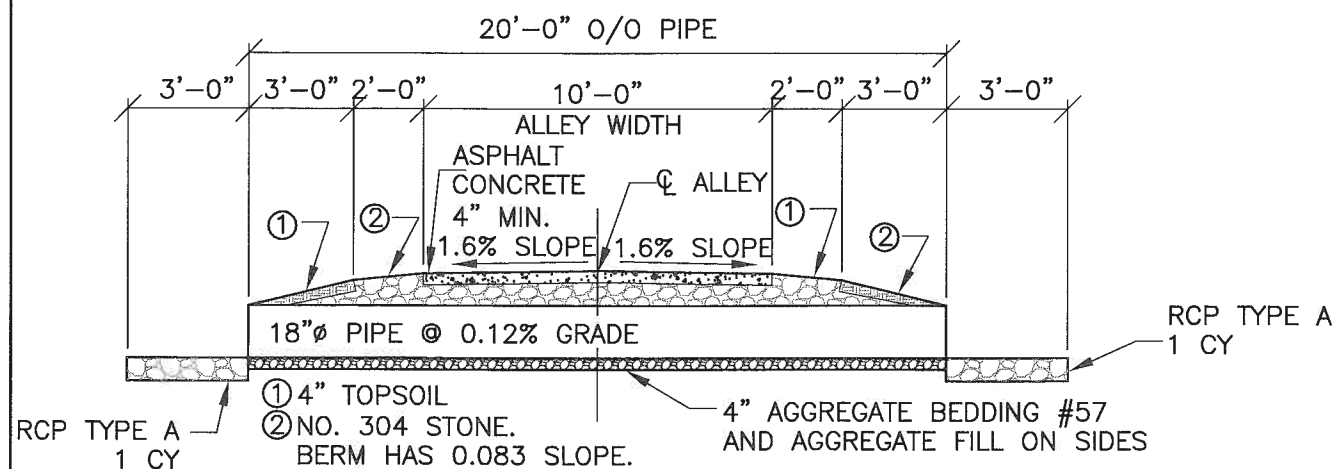
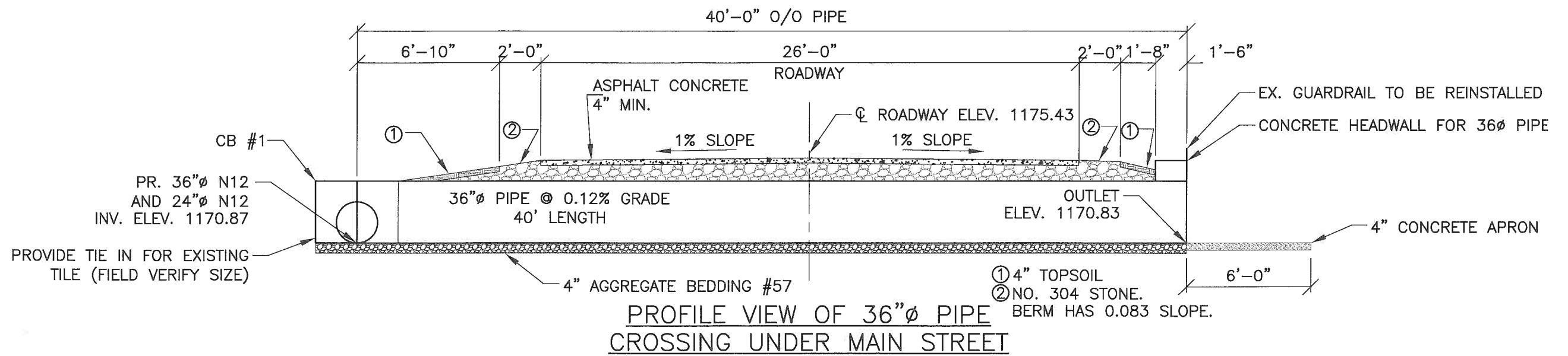
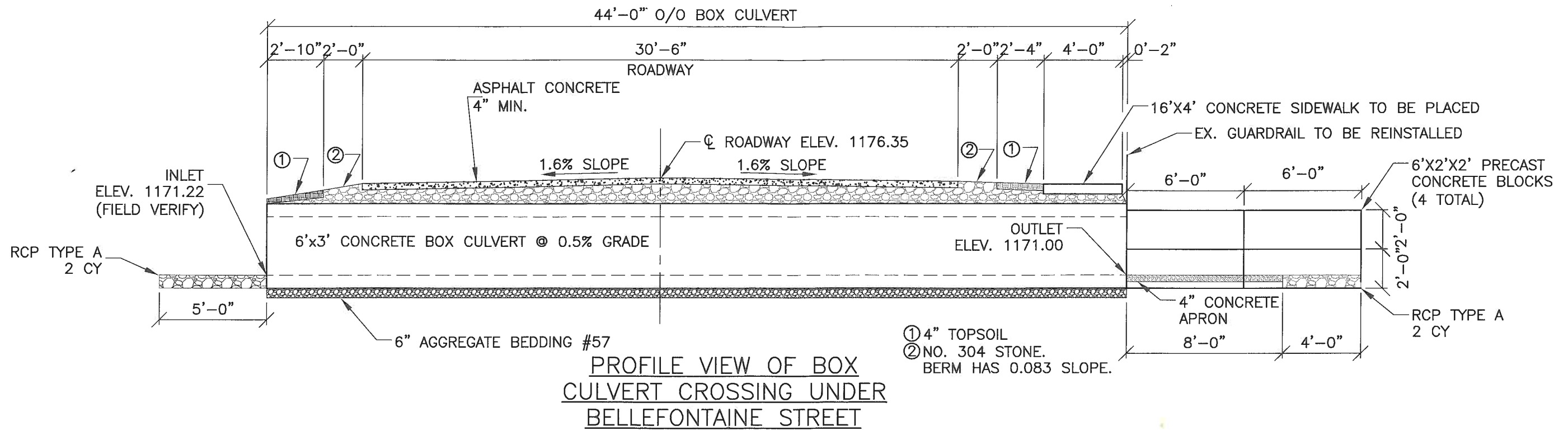
8
10



CROSS SECTIONS
STA. 0+00 TO 1+50

PHASE 3

9
10



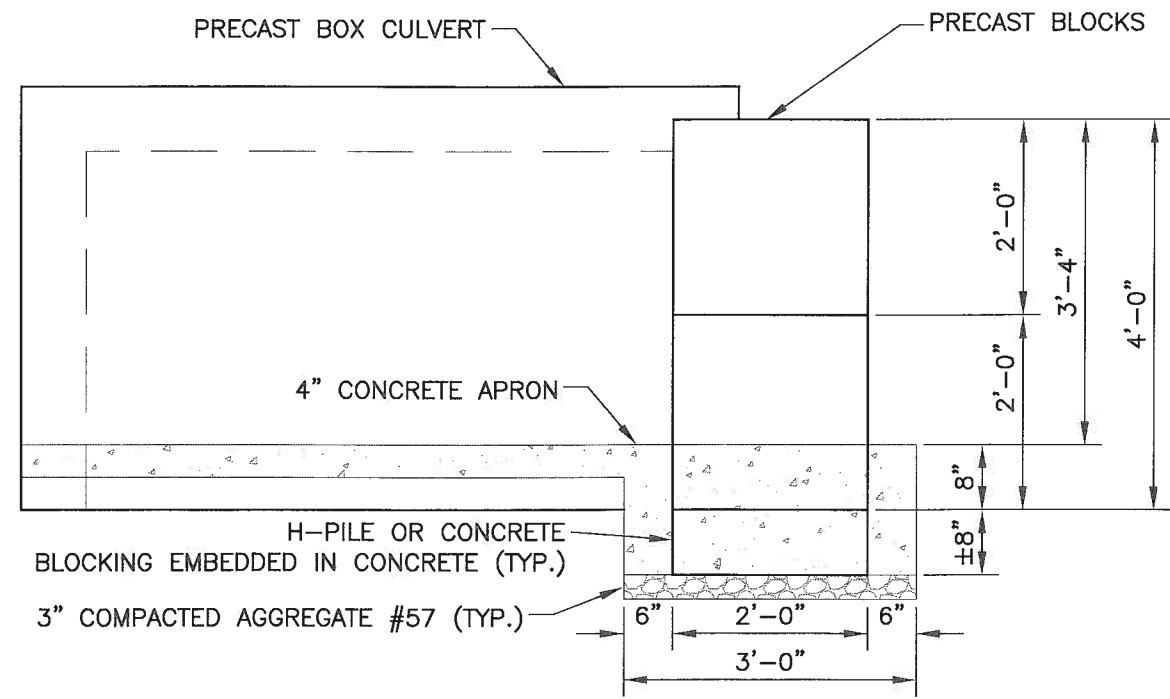
LOGAN COUNTY ENGINEER'S OFFICE
1991 C.R. 13, P.O. BOX 427
BELLEFONTAINE, OHIO 43311

DESIGNED	MJK	CHECKED	SOC
DRAWN	MJK	REVISED	
REVIEWED	CDJ	DATE	7/17/17
WORK ORDER NUMBER	5710		

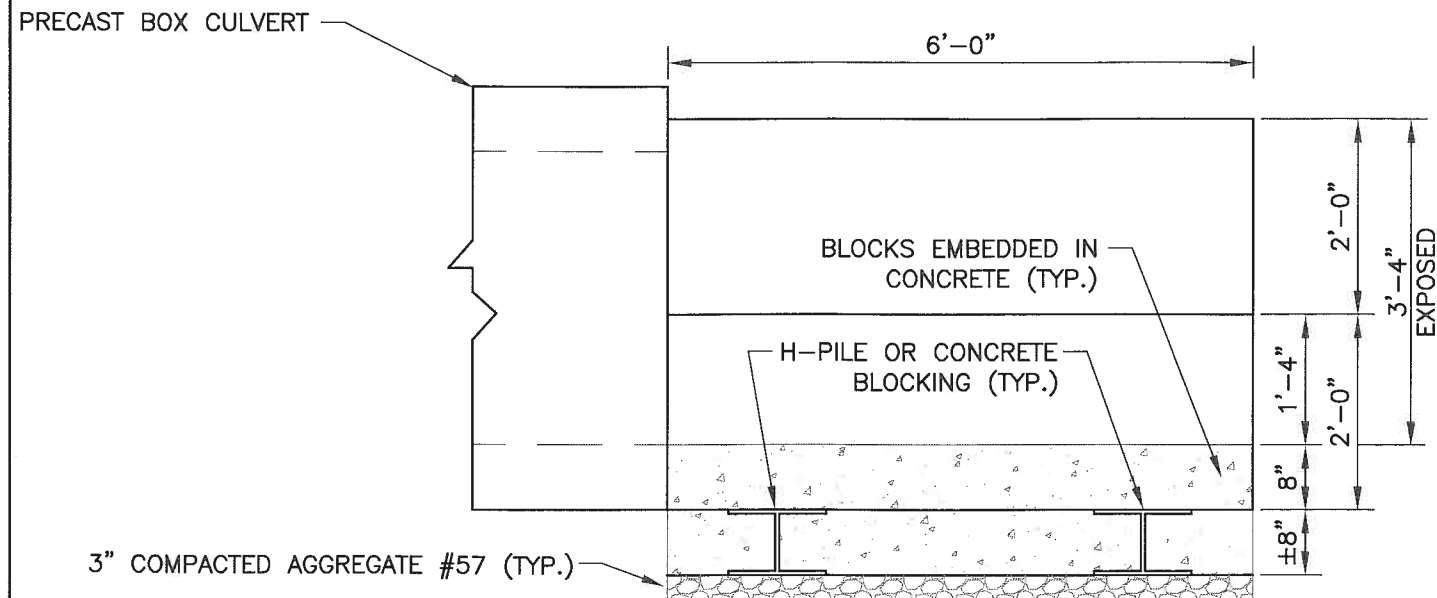
STRUCTURE DETAILS

PHASE 3

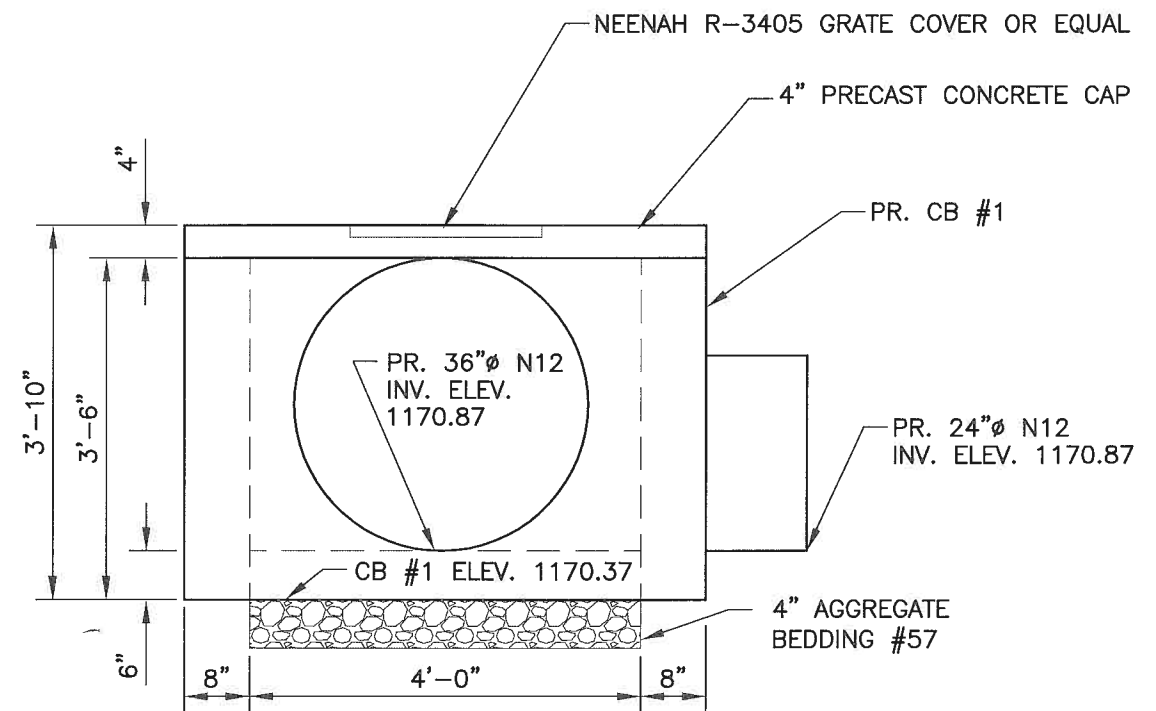
10
10



SECTION VIEW OF
PRECAST BLOCKS



TYP. SECTION VIEW OF
THE BASE OF PRECAST BLOCK



NOTE 6" MIN. CLEARANCE
FROM INSIDE DIAMETER OF PIPE
TO BOTTOM OF CATCH BASIN

SECTION VIEW OF CB#1